

Rothwell Crescent



Refurbished to an impressive standard throughout, with little expense spared

OIEO £129,995

Stunning kitchen with built-in appliances and quartz tops

New floorings, internal doors and floorings

Replaced combi-boiler

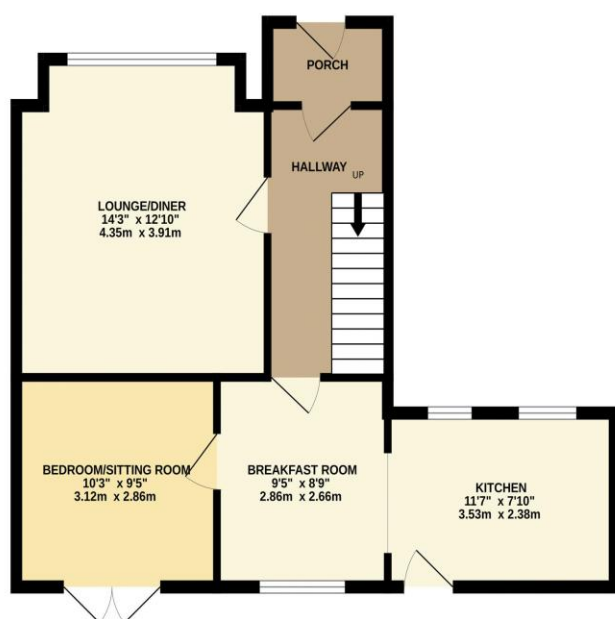
Generous corner plot with front, side and rear gardens



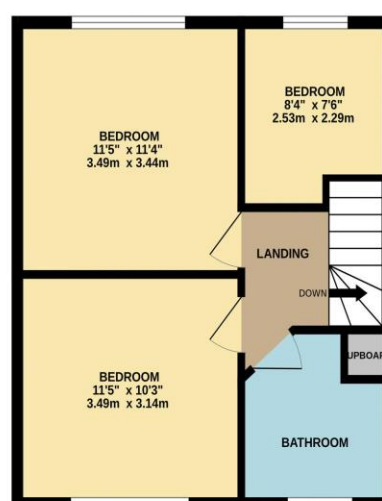
Refurbished to a superb standard, internal inspection is necessary to appreciate the 'high specification' finish and impressive quality of the stunning accommodation. A fantastic refitted kitchen boasts a range of integral appliances, including dishwasher, washing machine, fridge/freezer, oven and microwave, finished with quality 'Quartz' tops - a feature worthy of special mention.

The upgrades also include new floorings throughout, remodelling, new internal doors, new front and rear composite doors, a modern refitted bathroom and replaced combi boiler. Occupying a generous corner plot, with front, side and rear gardens, whilst being situated within this popular residential are. Briefly, the accommodation comprises an entrance hall, lounge, extended kitchen/diner and separate sitting room which could easily double as a fourth bedroom on the ground floor. The first floor brings three bedrooms, and the bathroom. No forward chain.

GROUND FLOOR
543 sq.ft. (50.5 sq.m.) approx.



1ST FLOOR
409 sq.ft. (38.0 sq.m.) approx.



TOTAL FLOOR AREA: 953 sq.ft. (88.5 sq.m.) approx.

Whilst every attempt has been made to ensure the accuracy of the floorplan contained here, measurements of doors, windows, rooms and any other items are approximate and no responsibility is taken for any error, omission or mis-statement. This plan is for illustrative purposes only and should be used as such by any prospective purchaser. The services, systems and appliances shown have not been tested and no guarantee as to their operability or efficiency can be given.
Made with Metropix ©2024



“The Property Experts”



Multi-Award Wining



Tenure: Freehold

Council Tax Band: A

EPC Rating: C

**INGLEBY
HOMES**
SALES & LETTINGS

AGENTS NOTE: Every care has been taken with the preparation of these details, but they are for general guidance only. Measurements and dimensions are approximate, and any fixtures or fittings shown in photography does not infer that they are to be included within the sale. The agent has not tested any appliances or supplies and professional verification of these should be sought prior to purchase if required. These particulars do not constitute a contract or part of a contract.